



UPDATE
07/07/2020

BACK TO CLASS 2020



Together Again

Every decision made will take into consideration the latest guidance and direction from local, state and federal authorities.

Dear Pasadena ISD Families,

Based upon guidance and direction from the Texas Education Agency and local and state officials, we are moving forward with plans to reopen our schools in the fall and want to provide you with our commitment to student and staff safety. We have remained in contact with local, state and federal authorities and have developed two options, approved by the Texas Education Agency, for students to learn in a face-to-face or virtual platform. We are committed to providing you the most up to date information as we learn more and seek to clarify how these changes will affect our school year.

This document provides guidance on health protocols, school day operations, and instructional guidelines. In addition to these protocols, we will implement COVID-19 Action Levels at each campus and location, similar to the threat level system used by Harris County. This system will include adjustments to arrival and dismissal procedures, child nutrition services, transportation and campus organization. We will implement new and more intense health and hygiene practices, along with increased cleaning, training and reminders about safe and healthy practices. New protocols including restrictions on campus visitors, deliveries and student gatherings are in place for the protection of all students and staff.

Campus and program specific guidelines will be communicated as we get closer to the start of school, but I want to ensure you have specific information about efforts related to health and safety. I ask that you take time to read through this guidance document and reach out with your feedback or questions. I know we will get through this crisis and I look forward to when we are all back in our regular routines. Regardless of the platform you choose for your child, rest assured we will support your decision and are committed to providing your child an excellent education in either platform.

Thank you and stay safe!



DeeAnn Powell, Ed. D., Superintendent

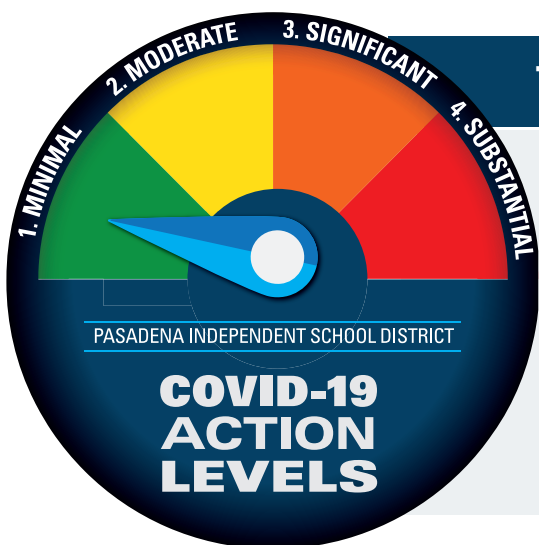


Table of Contents

Health Protocols	4
School Day Operations	6
Instructional Guidelines	9
Supporting Documents	12-15



HEALTH PROTOCOLS

Every decision made will take into consideration the latest guidance and direction from local, state and federal authorities.



Health Protocols



Pasadena ISD continues to monitor the spread of COVID-19 and receives regular guidance from Texas Governor Greg Abbott, Texas Education Agency Commissioner Mike Morath and other local, state and federal agencies regarding response, prevention and mitigation efforts. This direction will continue to evolve based on COVID-19 conditions across the state and our local community. We will educate our students, staff, and community members about the importance of frequent hand washing; covering a cough or sneeze; not touching one's eyes, nose, and mouth; staying home when sick; and other measures to help prevent the spread of communicable diseases. Hand sanitizer will be available at every building entrance and in every classroom. Pasadena ISD Custodial Services will continue to routinely clean and disinfect all facilities, including cleaning frequently touched objects and surfaces with approved germicidal agents which are effective against multiple disease-causing viruses and bacteria.

COVID-19 Daily Self-Screening

All parents, students and staff will be required to self-screen daily prior to entering any Pasadena ISD facility or boarding transportation. (see pg.12)

Parents/Guardians can help by keeping children home who are sick. If a child has COVID-19 symptoms, under TEA guidelines, the child cannot return to school until at least ten days have passed since symptoms first appeared, and at least three days (72 hours) have passed since recovery (resolution of fever without the use of fever reducing medications); and the individual has improvement in symptoms (cough, shortness of breath, etc.).

Social Distancing

Students and staff will be asked to maintain a distance of 3-6 feet when feasible.

Face Coverings

Students and staff will be strongly encouraged to wear face coverings. During periods of escalated community risk, face coverings may be mandatory. Face coverings will be required while utilizing all district transportation services. Some Pasadena ISD staff, such as School Nurses, Nutrition Services staff, and Custodial Services will be wearing masks and gloves throughout the school day.

Temperature Checks

Daily temperature checks of all students at school will not be performed; however, each campus has been provided no-touch infrared thermometers for screening symptomatic students and staff.

Registered Nurse

There is at least one Registered Nurse assigned to every Pasadena ISD campus.

Response to COVID-19 Cases

PISD staff will initiate the Pasadena ISD Isolation Plan in the event of a suspected COVID-19 case on campus. (see pg.14) In working with district and local health authorities a course of action will be determined regarding necessary communication, required sanitation, possible closures and contact tracing. Upon notification of a lab-confirmed COVID-19 case on a campus, the district will communicate with teachers, staff, and families of students who were potentially exposed.



SCHOOL DAY OPERATIONS

Every decision made will take into consideration the latest guidance and direction from local, state and federal authorities.

Campus and Program specific guidelines and procedures consistent with district protocols will be provided by individual campuses or departments.



School Day Operations



Campus Cleaning

- Campuses will be cleaned throughout the instructional day.
- Classrooms will be equipped for cleaning between transition of students.
- Age appropriate signage for proper hygiene practices will be posted throughout the buildings.

Arrival/Dismissal/Transitions

Arrival

- Multiple entry points will be established.
- Students will report straight to classrooms whenever possible.
- All areas of the building (gym, cafeteria, larger classrooms, common areas, etc.) will be utilized to limit the size of student groupings.

Dismissal

- Multiple exit points will be established.
- Campuses will implement staggered release procedures.
- Students will be released straight from their classroom whenever possible.

Transitions

- Students and staff will follow protocols for face coverings.
- Classroom doors will be left open to reduce high touch areas when possible.
- Traffic patterns will be established throughout the campus that separate individuals to the greatest extent possible.
- Staff and signage will be posted to reinforce physical distance expectations.

Transportation

- Families are encouraged to transport, if able, students to and from school during the pandemic.
- Parents should ensure students do a daily COVID-19 screen prior to boarding school transportation.
- Bus transportation will be offered; however, due to social distance recommendations, students (age appropriate), drivers, and bus monitors will be required to wear face coverings.
- Bus riders should distance themselves 6 feet from each other while waiting to board the bus and while loading the bus.
- Hand sanitizer will be located at the front of the bus for use as students enter the bus.
- Students will be assigned seats and will be loaded back to front with no more than 2 students per seat.
- Buses will be unloaded from front to back when arriving at the school.
- Driver will spray and sanitize seats, handrails, and steering wheel after each use.
- Buses will be thoroughly disinfected on a scheduled rotation.



School Day Operations



Meal Service

- Breakfast will be provided for all students.
- Students will use hand sanitizer before entering the serving line.
- Cafeteria and serving areas will be cleaned as students transition.
- When reporting to the cafeteria for lunch, students will be released on a staggered schedule.
- Campuses will use a variety of options for seating arrangements to maximize social distancing.

Pasadena ISD 2020-2021 Calendar

The district plans to utilize the Board approved 2020-2021 calendar; however, depending on the circumstances, the district is prepared to modify and extend the calendar. Ample notice and communication will be provided if a calendar change is needed.

Recess/Outdoor Time

Outdoor play and learning will be encouraged.

Visitors/Deliveries/Miscellaneous

- To limit exposure, informal campus visits will be restricted (including during meal time).
- Essential meetings will be by appointment or a virtual format.
- All approved visitors must self-screen prior to entry.
- To ensure the safety of students and staff, no outside deliveries for students will be accepted (i.e. food, gifts, food delivery services, etc.).
- All field trips and large gatherings such as pep rallies, assemblies, etc. will be prohibited until further notice.

Extracurricular/Non-Academic Activities

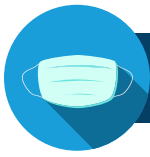
- Athletics, Fine Arts and other extracurricular activities will be conducted in alignment with UIL guidelines.
- Non-UIL activities will follow the same COVID-19 related guidelines as UIL activities.
- Outdoor gatherings must be in compliance with state social distancing guidelines.
- Any student social activities (i.e. dances, celebrations) must be conducted in open air venues or limited to less than 50 participants. All such activities, regardless of location, must be in compliance with state social distancing guidelines.
- Hand washing and/or hand sanitation stations must be available for any activity.



INSTRUCTIONAL GUIDELINES (Fall Semester)

Every decision made will take into consideration the latest guidance and direction from local, state and federal authorities.

Campus and Program specific guidelines and procedures consistent with district protocols will be provided by individual campuses or departments.



Instructional Guidelines



“The American Academy of Pediatrics strongly advocates that all policy considerations for the coming school year should start with a goal of having students physically present in school. The importance of in-person learning is well-documented, and there is already evidence of the negative impacts on children because of school closures in the spring of 2020,” ([Click here to view article](#)).

Pasadena ISD also believes the best instructional setting for students is face-to-face instruction; however, regardless of the platform you choose for your child, rest assured we will support your decision. We are committed to providing your child an excellent education in either platform.

Grading

Grading policies will be the same for students in face-to-face and virtual settings. Online school grades will count toward GPA, class rank and UIL eligibility, just like on-campus grades will count.

Special Programs

Students in specialized programs, including but not limited to: special education, 504, Dyslexia, ELL, Dual Language, GT, CTE, and Early College will receive information related to their program once individualized plans are finalized. Individual education plans, accommodations, and modifications will be followed in face-to-face and virtual settings. Progress will be carefully monitored and the ARD Committee may re-convene to make appropriate recommendations to meet individual student needs to ensure continued growth in the general education curriculum and on IEP goals and objectives.

FACE-TO-FACE INSTRUCTION

Students in Pasadena ISD are encouraged to attend school and receive instruction in a face-to-face format for the 2020-2021 school year. This scenario will include a blended instructional platform that involves in-person instruction with the use of SeeSaw (PK-2), Google Classroom (3-8), Schoology (9-12) and the Summit Platform (4-12).

There will almost certainly be situations that necessitate temporary school closure(s) due to positive COVID-19 cases in schools. Teachers will train students to use the platforms during the first weeks of school so they will be familiar with them in the event we have to quickly switch to a virtual setting. Pasadena ISD will be prepared to pivot to at-home learning, while actively working to prevent the spread through mitigation practices. We will work with students and parents to help ensure the learning continues in the event this occurs.



Instructional Guidelines



VIRTUAL INSTRUCTION

Virtual instruction will be offered through a remote asynchronous instructional format. This format does not require having the instructor and student engaged at the same time; however, the student is required to be engaged in learning each day. The teacher will provide lessons and give students daily feedback. Schools will establish structured, instructional schedules for students to follow.

Virtual instruction will align to the level of rigor students will experience in the face-to-face environment and will have additional expectations than what was experienced in the spring when all students were learning in a virtual setting.

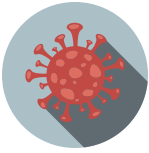
- Face-to-face instruction is highly recommended for any student who experienced difficulty or was unsuccessful in the virtual learning platform in the spring of 2020.
- PK-4th grade students must have a parent or an adult present who can facilitate learning each day.
- Students must be engaged and must participate in all required coursework and virtual lessons during normal school hours.
- The student will be required to participate in all tutoring sessions and/or video conferencing required by the teachers.
- For accelerated and advanced high school weighted courses and many CTE courses, students must report to a designated campus on assigned days and times to take assessments on units of study or complete CTE performance based assignments.
- For activities (including performance-based assignments) which must occur on campus, parents will be responsible for transportation.





SUPPORTING DOCUMENTS

Every decision made will take into consideration the latest guidance and direction from local, state and federal authorities.



DAILY COVID-19 SCREENING

For Students, Staff, Parents & Visitors

In the last 48 hours, have you had any of the following symptoms unrelated to any other medical conditions that you already have?

<input type="checkbox"/> Yes <input type="checkbox"/> No	Fever of 100.0° or above or felt feverish <i>(could include alternating shivering & sweating)</i>
<input type="checkbox"/> Yes <input type="checkbox"/> No	New or unexplained chills
<input type="checkbox"/> Yes <input type="checkbox"/> No	New or unexplained cough
<input type="checkbox"/> Yes <input type="checkbox"/> No	New or unexplained trouble breathing, shortness of breath, or wheezing
<input type="checkbox"/> Yes <input type="checkbox"/> No	New or unexplained fatigue
<input type="checkbox"/> Yes <input type="checkbox"/> No	Sore throat
<input type="checkbox"/> Yes <input type="checkbox"/> No	Diarrhea
<input type="checkbox"/> Yes <input type="checkbox"/> No	New or unexplained muscle aches
<input type="checkbox"/> Yes <input type="checkbox"/> No	New or unexplained loss of smell, taste, or change in taste
<input type="checkbox"/> Yes <input type="checkbox"/> No	In the past 14 days, have you been in contact with someone who has tested positive for COVID-19, or who has COVID-19, or is under evaluation for COVID-19?

If you have answered YES to any of the above, you may not come to school until all of the following criteria have been met:

- **At** least ten days have passed since symptoms first appeared
- **AND** at least 3 days (72 hours) have passed since recovery of fever without the use of fever-reducing medications
- **AND** you have improvement in symptoms such as cough and shortness of breath
- **OR** you may provide written clearance from a medical professional in order to return based on an alternative diagnosis.

You or your parent/guardian should contact your primary care provider. Your doctor will make the decision if you should get tested for COVID-19.

If you do not have health insurance, you can still get tested for COVID-19 if your doctor or healthcare provider recommends it.

For information about testing, call your doctor and/or access medical care the way you usually would. If you need help finding a doctor or accessing medical care, call 2-1-1, and they will direct you to a low or no cost provider in your area.

*To be considered exposed to COVID-19, you need to have prolonged close contact with a person who has the virus. Close contact includes living in the same household, caring for a sick person with the virus, being within 6 feet of a sick person with the virus for at least 15 continuous minutes without the use of a face covering, or being in direct contact with secretions from the sick person.



Student Process Map for COVID-19 (Fall 2020)

Student is either lab-confirmed to have COVID-19 or experience the symptoms of COVID-19.

The student does not report to school or participate in other school activities. The student may return to campus after 10 days have passed from positive test result or symptom onset, the student has improvement in symptoms, and at least 72 hours have passed with no fever without the use of fever-reducing medication.

Upon notification of a lab-confirmed COVID-19 on a campus, the district will communicate with teachers, staff, and families of students who were potentially exposed.

Student reports one or more symptoms BEFORE entry to building using screening tool.

The student does not report to school or participate in other school activities. The student may return to campus after 10 days have passed from symptom onset with improvement in symptoms, and at least 72 hours have passed with no fever, without the use of fever-reducing medication.

Student reports experiencing one or more symptoms of COVID-19 while during the school day.

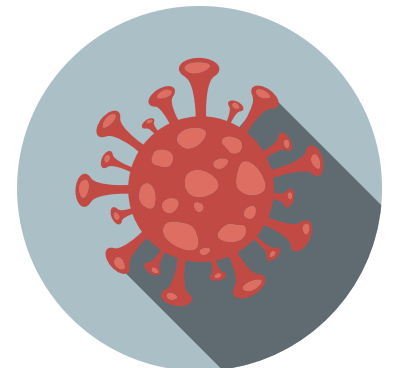
The campus will follow the Student Isolation Plan.

Student reports having prolonged close contact* with someone who is lab-confirmed to have COVID-19.

The student does not report to school or participate in other school activities. Student should contact their primary care physician for guidance and remain home to monitor symptoms for 14 days.

Student reports someone in their home was exposed to someone who is lab-confirmed to have COVID-19.

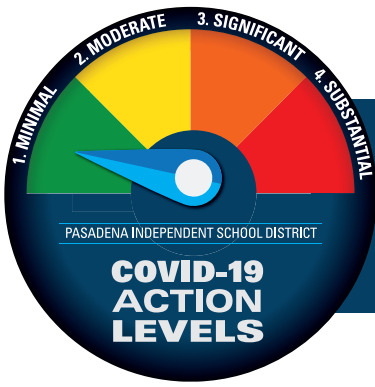
Student may report to school as usual. This is not considered to be prolonged close contact.





Student Isolation Plan (Fall 2020)

- Symptomatic students will be required to apply a face covering and report to the designated isolation area for further evaluation.
- The ill student will remain isolated with assigned designated staff member to be monitored and receive medical care if needed until parent/guardian arrives for student pick up.
- Monitoring staff member must perform hand hygiene and wear PPE for the duration of the isolation period.
- Campus administrators will immediately notify District Health Services and will follow their guidance.
- After students and staff are removed from the isolation area, it will be sanitized using approved germicidal agents by PISD custodial staff wearing appropriate PPE.



Pasadena ISD COVID-19 Action Levels

LEVEL 1 Minimal Transmission	LEVEL 2 Moderate Transmission	LEVEL 3 Significant Transmission	LEVEL 4 Substantial Transmission
<p>Staff and students self-screen daily for COVID-19 symptoms prior to arrival</p> <p>Strongly encourage use of face coverings for students and staff (Mandatory on bus)</p> <p>Teach and reinforce health hygiene</p> <p>Increased opportunities for hand hygiene</p> <p>Maintain frequent cleaning and disinfection of commonly touched surfaces and areas</p> <p>Communicate to parents to keep sick students home</p> <p>Extracurricular activities permitted</p> <p>Restrict outside visitors and guests</p> <p>Continue to monitor attendance and communicate with local health authorities</p>	<p>Intensify cleaning and disinfection of commonly touched surfaces and areas</p> <p>Mandatory face coverings for teachers and staff</p> <p>Face coverings strongly encouraged for students on campus and required if using school transportation services</p> <p>Consider alternate methods of movement within the building and decreased group activities</p> <p>Consider postponing non-critical gathering and events</p> <p>Restrict outside visitors to essential services only</p>	<p>Postpone/cancel all non-critical gatherings and events</p> <p>Consider staggering or extending start times and dismissal times</p> <p>Implement multiple social distancing strategies for gatherings, classrooms, and movement through the building with extended school dismissals</p> <p>Consider closing campuses where there are high concentrations of reported COVID-19 symptoms or known lab-confirmed cases</p> <p>Mandatory face coverings for all</p> <p>Consider limiting number of students on campuses</p> <p>No outside visitors</p> <p>Consider altering capacity limits on school buses</p>	<p>All district facilities are closed and all district events are canceled</p> <p>All education will be conducted via distance learning</p> <p>Maintain close coordination with local health officials</p>



PARENT SURVEY

The input you provide in this survey is critical to our efforts at creating adequate and accurate resources for your child in the fall. The learning format you choose will be your commitment to your child's continuing success in PISD. [***\(Click here to take the survey.\)***](#)



Together Again



2020

PASADENA INDEPENDENT SCHOOL DISTRICT
www.pasadenaisd.org